



**MARINE SERVICES WESTERN AUSTRALIA PTY. LTD.**  
(INCORPORATED IN WESTERN AUSTRALIA)

ACN 063 996 118  
ABN 51 543 285 137

Dear Captain,

Safety of all personnel involved in the mooring of ships is a priority for our company. To assist us in a safe and incident free mooring operation please review the following mooring procedures and brief your officers and crew accordingly prior to pilot boarding.

Pages 2: Anchor lowering procedure all berths.

Page 3: Mooring procedure Parker Point 2 and 4.

Page 4: Mooring procedure Parker Point 3 and 5.

Pages 5: Mooring procedure East Intercourse Island.

Page 6: Mooring procedure Dampier Fuel Berth.

Thank you for your cooperation with the above.

*Dampier Pilots.*



**MARINE SERVICES WESTERN AUSTRALIA PTY. LTD.**  
(INCORPORATED IN WESTERN AUSTRALIA)

ACN 063 996 118  
ABN 51 543 265 137

## **ANCHOR LOWERING PROCEDURE**

Prior to running the forward Breast lines and Head lines the pilot will instruct the Captain to walk out the port and starboard anchors such that both anchors are below the waterline.

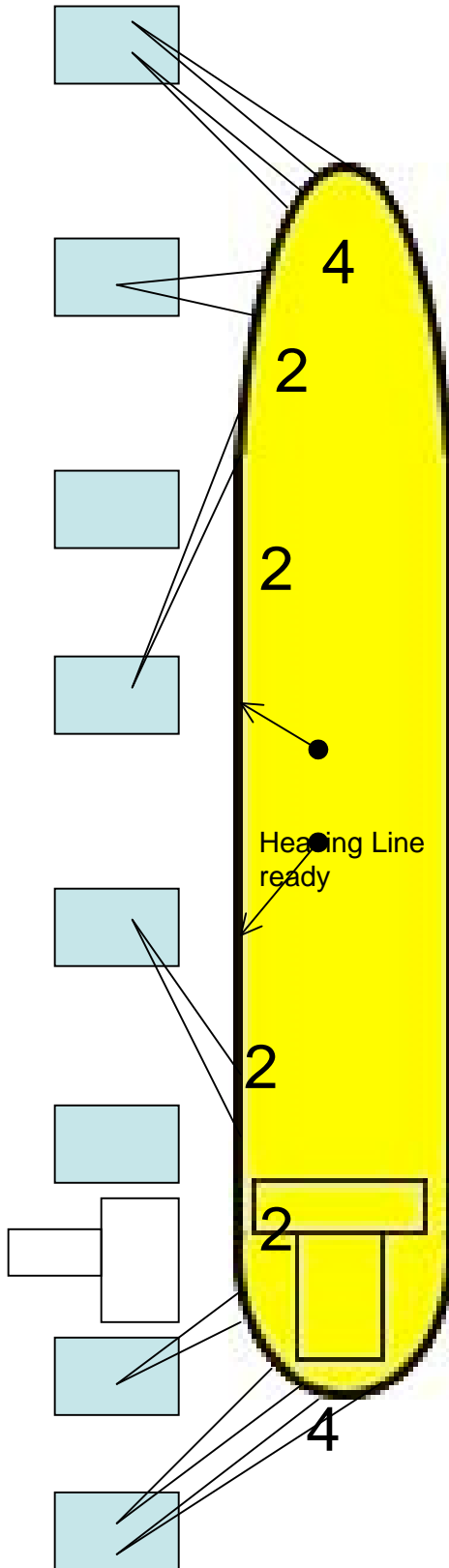
**The anchors should then be secured with the brake and stopper bar and the officer in charge report to the Captain that the anchors are ALL SECURE.**

Once it has been confirmed that both anchors are secure then the mooring operation will continue.

Thank you for your cooperation.

*Dampier Pilots*

**Parker Point 2 and 4**



**Turn Out Gangway** - to be lowered before mooring

**Open first 2 Hatches**

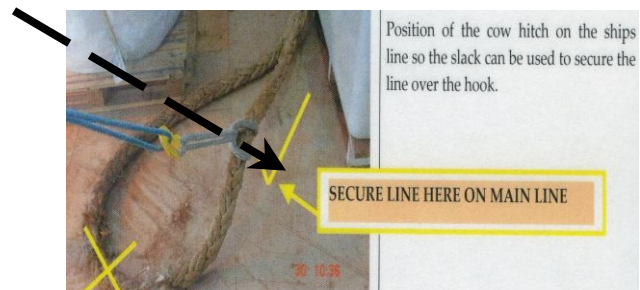
**Make tugs fast** - (*at all time stay clear of Tugs lines*). Move to Port Spring Lines.

**Spring lines 1st, by HEAVING LINE.**

**Heaving lines** ready Amidships

Pass heaving line to shore to attach to messenger line.

Attach messenger to Spring as per following diagram



Shore will heave to Dolphin with winch.

When lines on Hook, **LEAVE SLACK !**

**PILOT WILL INSTRUCT WHEN TO TENSION**

**Breast Lines, Head lines & Stern Lines By Lines Boat.**

Breast lines 1st - Send 2 lines together.

When fast on hooks **LEAVE SLACK** and move to Head/Stern Lines

Run inside Stern/Head lines x 2.

**LEAVE SLACK - DO NOT TENSION LINES!**

Then send outside Head/Stern lines x 2.

When all line on hooks and lines boat is clear, and mooring gang clear of Dolphin, **PILOT WILL GIVE**

**CLEARANCE TO TENSION UP ALL LINES**

**Parker Point 3 and 5**

**Turn Out Gangway** - to be lowered before mooring

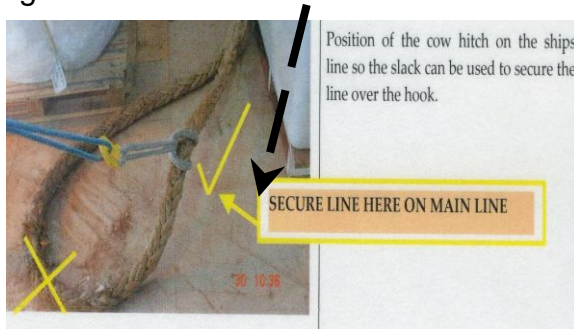
**Make tugs fast** - *(Once made fast stay clear of Tugs lines at all times)*. Move to Starboard Spring Lines.

**Spring lines 1st, by heaving line.**

Run Heaving lines to Amidships

Pass heaving line to shore to attach to messenger line. Retrieve Messenger.

Attach Messenger to Spring line as per following diagram.



Shore will heave to Dolphin with winch.

When lines on Hook, **LEAVE SLACK !**

**PILOT WILL INSTRUCT WHEN OKAY TO TENSION LINES**

**Breast Lines, Head lines & Stern Lines By Lines Boat.**

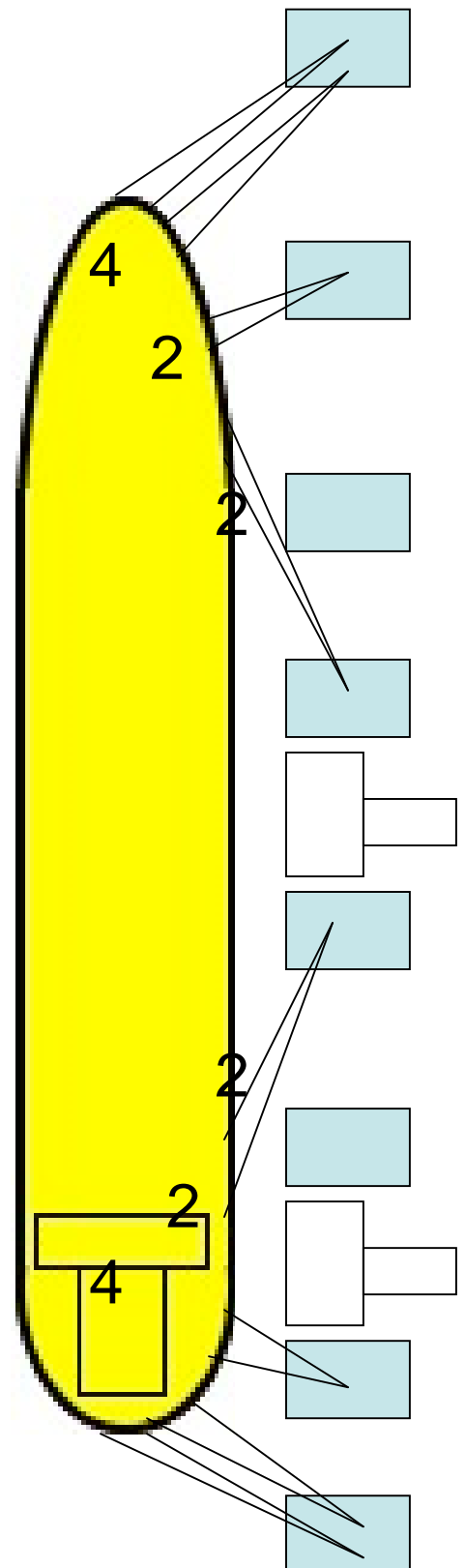
Breast lines 1st - Send 2 lines together.

When fast on hooks **LEAVE SLACK** and move to Head/Stern Lines

Run inside Stern/Head lines x 2. **LEAVE SLACK - DO NOT TENSION LINES!**

Then send outside Head/Stern lines x 2. Once lines boat is clear, and mooring gang clear of Dolphin,

**PILOT WILL GIVE CLEARANCE TO TENSION UP ALL LINES**



## East Intercourse Island

**Turn Out Gangway** - to be lowered before mooring

**Open first 2 Cargo Hatches**

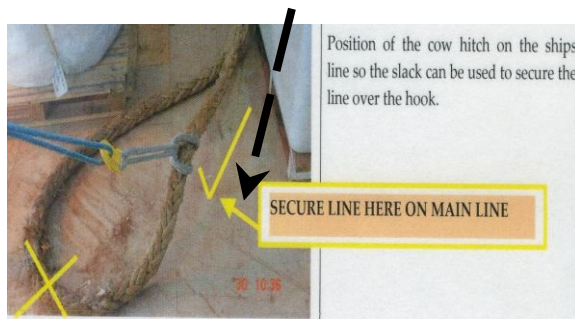
**Make tugs fast** - *(Once made fast stay clear of Tugs lines at all times)*. Move to Starboard Spring Lines.

**Spring lines 1st, by heaving line.**

Run Heaving lines to Amidships

Pass heaving line to shore to attach to messenger line. Retrieve Messenger.

Attach Messenger to Spring line as per following diagram



Shore will heave to Dolphin with winch.

When lines on Hook, **LEAVE SLACK !**

**PILOT WILL INSTRUCT WHEN OKAY TO TENSION LINES**

**Breast Lines, Head lines & Stern Lines By Lines Boat.**

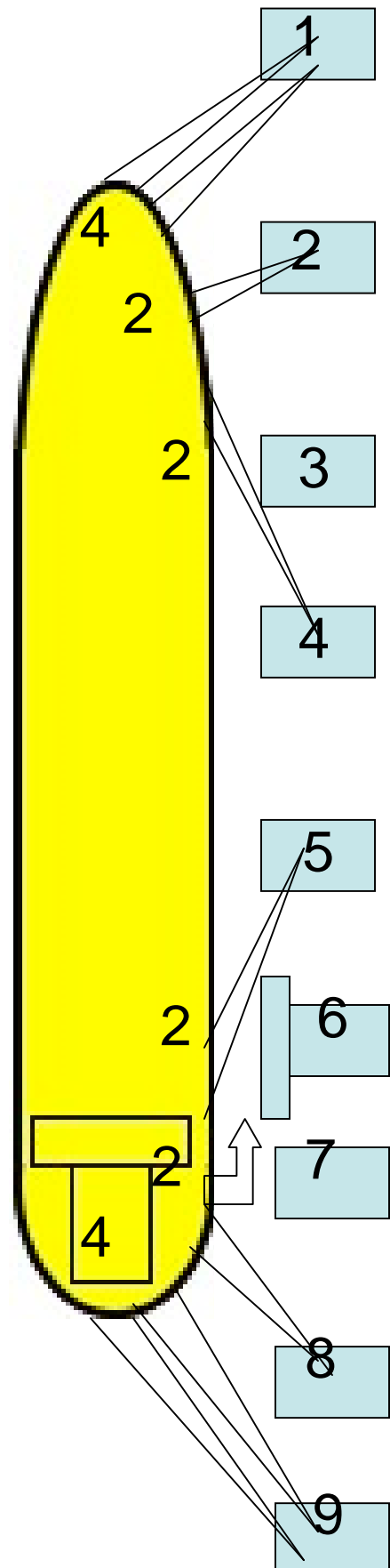
Breast lines 1st - Send 2 lines together.

When fast on hooks **LEAVE SLACK** and move to Head/Stern Lines

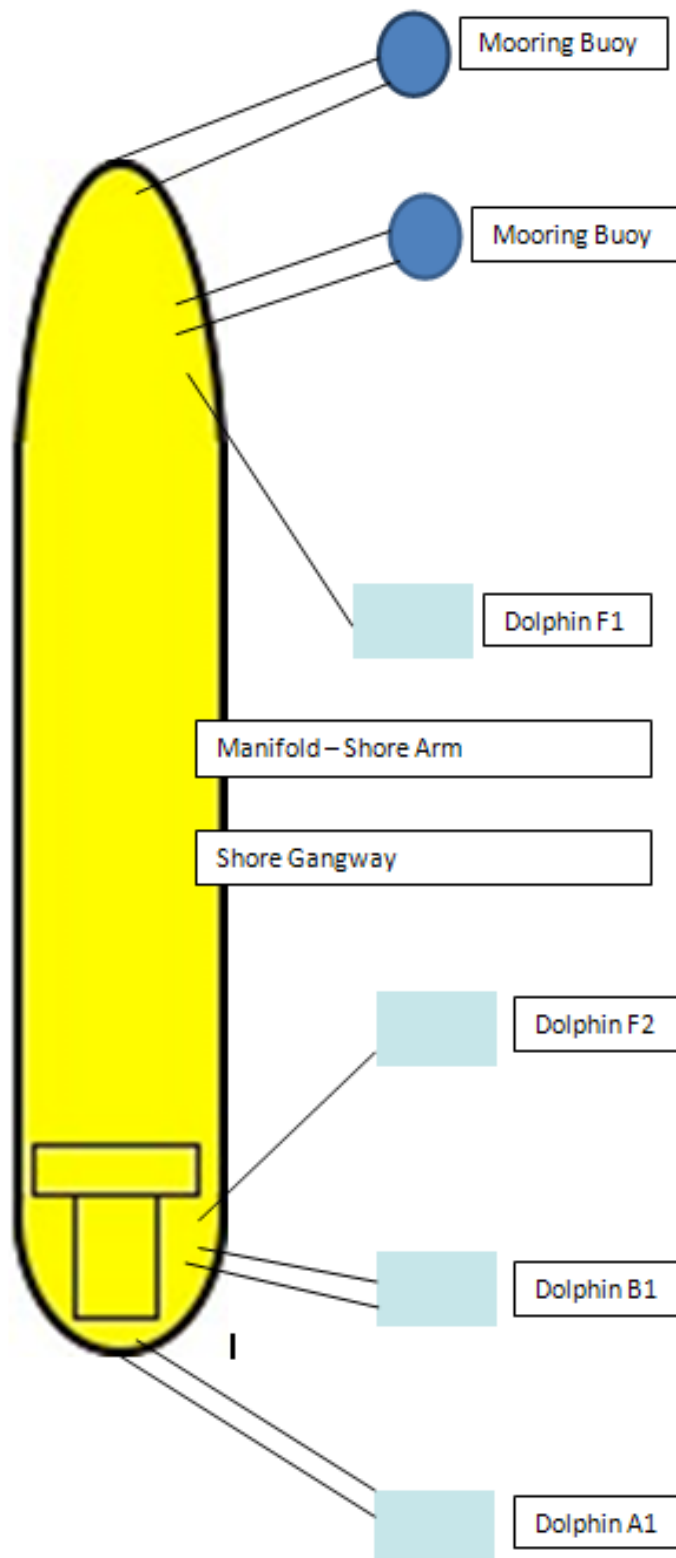
Run inside Stern/Head lines x 2. **LEAVE SLACK - DO NOT TENSION LINES!**

Then send outside Head/Stern lines x 2.

Once lines boat is clear, and mooring gang clear of Dolphin, **PILOT WILL GIVE CLEARANCE TO TENSION UP ALL LINES**



## Dampier Fuel Berth



All lines will be run by mooring boat

1x spring line from Poop deck to Dolphin F2

2x breast lines from Poop deck to Dolphin F2

2x stern lines from Poop deck to Dolphin F2

1x spring line from Focsle to Dolphin F1

2x breast lines from Focsle to Mooring buoy

2x headlines from Focsle to Mooring buoy

When all line on hooks and lines boat and mooring gang clear, **PILOT WILL GIVE CLEARANCE TO TENSION UP ALL LINES**